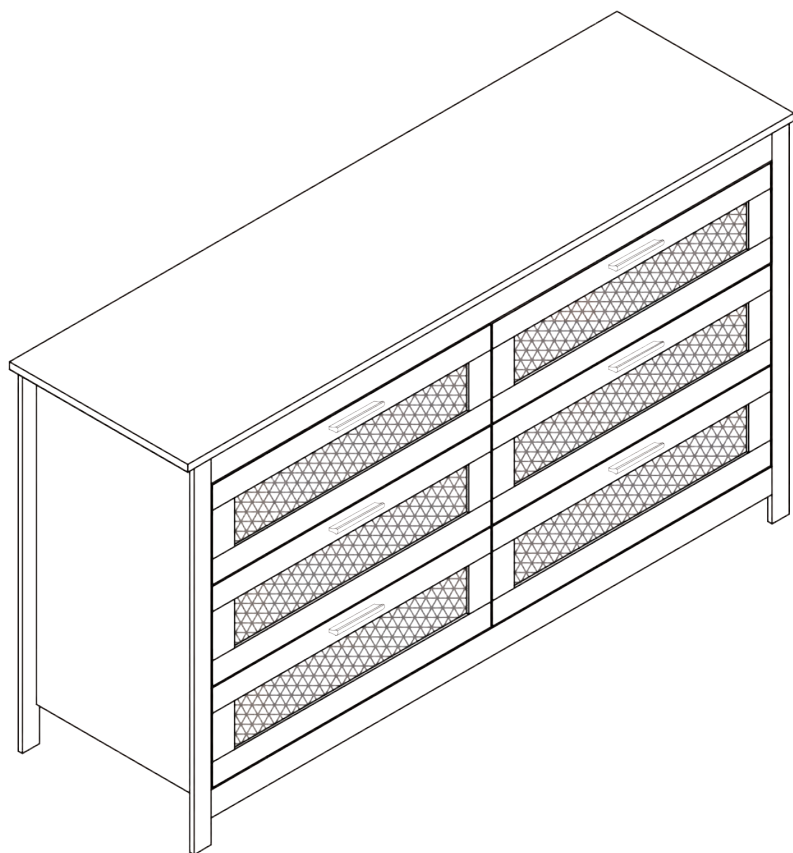


Chest of Drawers

User Manual



Thank you for choosing our Chest of Drawers. Please read the manual before assembly and use. And keep this manual for future reference.



IMPORTANT INFORMATION!

please read the entire manual before starting to assemble and/or using this product. follow the manual thoroughly and keep it for further reference.



AVOID SCRATCHES!

In order to avoid scratching this furniture should be assembled on a soft layer - could be a rug.



IMPROVE EFFICIENCY !

Try to find a partner to install with you, which can speed up the installation efficiency and shorten the time.



ANTI-TOPPLE WARNING !

Overtipped furniture can cause serious or fatal crush injuries. To prevent tipping over, be sure to use the wall attachment, if not included with this product. Please purchase the wall attachment that fit your wall. If unsure, seek professional advice. Please read and follow each step of the instructions carefully.

IMPORTANT !

It is important that any product which is assembled using any kind of screw is re-tightened 2 weeks after assembly, and once every 3 months - in order to assure stability through-out the lifespan of the product.




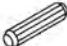


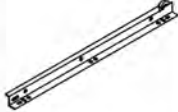







For regular maintenance and cleaning of the product, for the frame, please use a rag dipped in neutral detergent to fully wipe it, and then dry it with a clean rag. For glass materials, wipe with a rag dampened with water glass cleaner, and then dry with a dry rag.

Do not use an electric screwdriver, and do not use too much force when installing, because the board is easy to break.

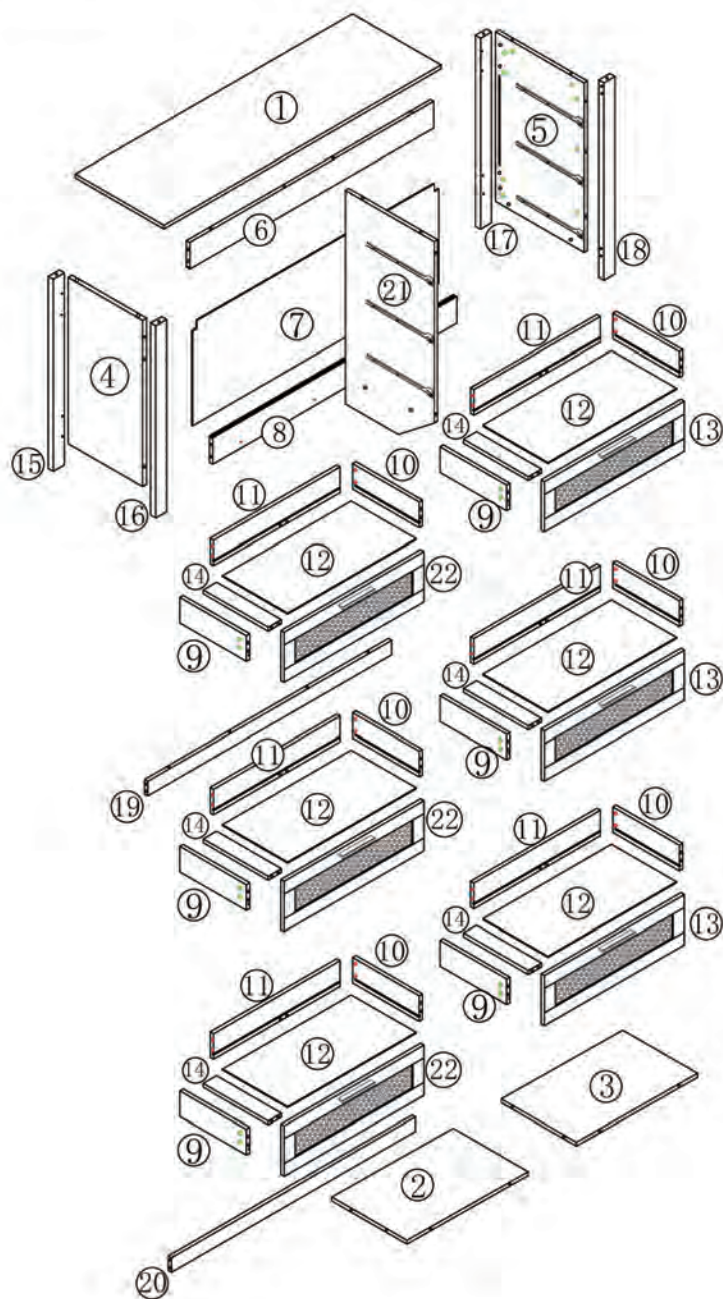
IN THE BOX

Please ensure all parts and accessories are included before assembly. If there are any missing or damaged parts

Hardware List

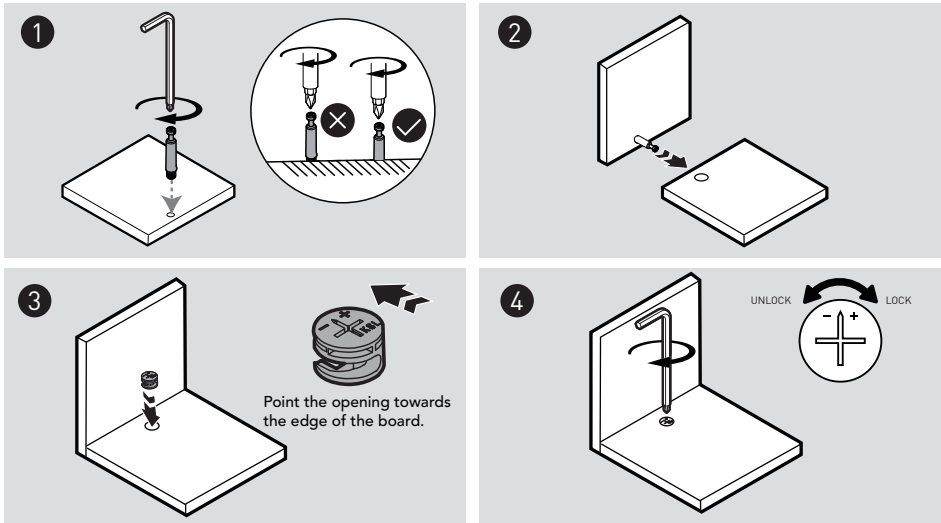
	<p>Tips</p> <ul style="list-style-type: none"> • When installing, please carefully confirm whether each screw corresponds to the manual, accessories with similar shapes can be distinguished by size • The number after "+" represents the spare hardware 		
 Φ 6*40	 Φ 6*40	 Φ 6x30mm	 Φ 6x30mm
(A) 108+2 pcs	(B) 14+1 pcs	(C) 12+1 pcs	(D) 6pcs
			 Φ 128mm
(E) 6pcs	(F) 6pcs	(G) 6pcs	(H) 6pcs
 Φ 5x40mm	 Φ 3.5*12mm		
(I) 8pcs	(J) 62+2pcs	(K) 2pcs	(L) 12+2 pcs
 Φ 3.5*12mm			
(M) 122+1pcs			

Parts List

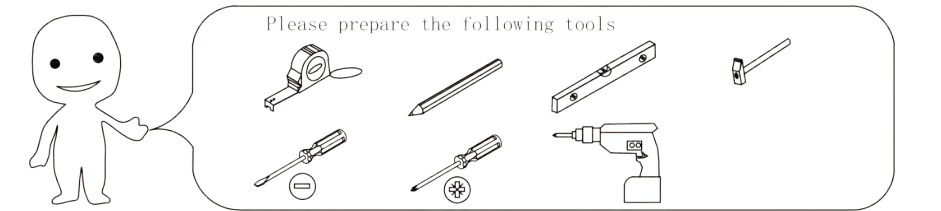


CAM LOCK FASTEN SYSTEM

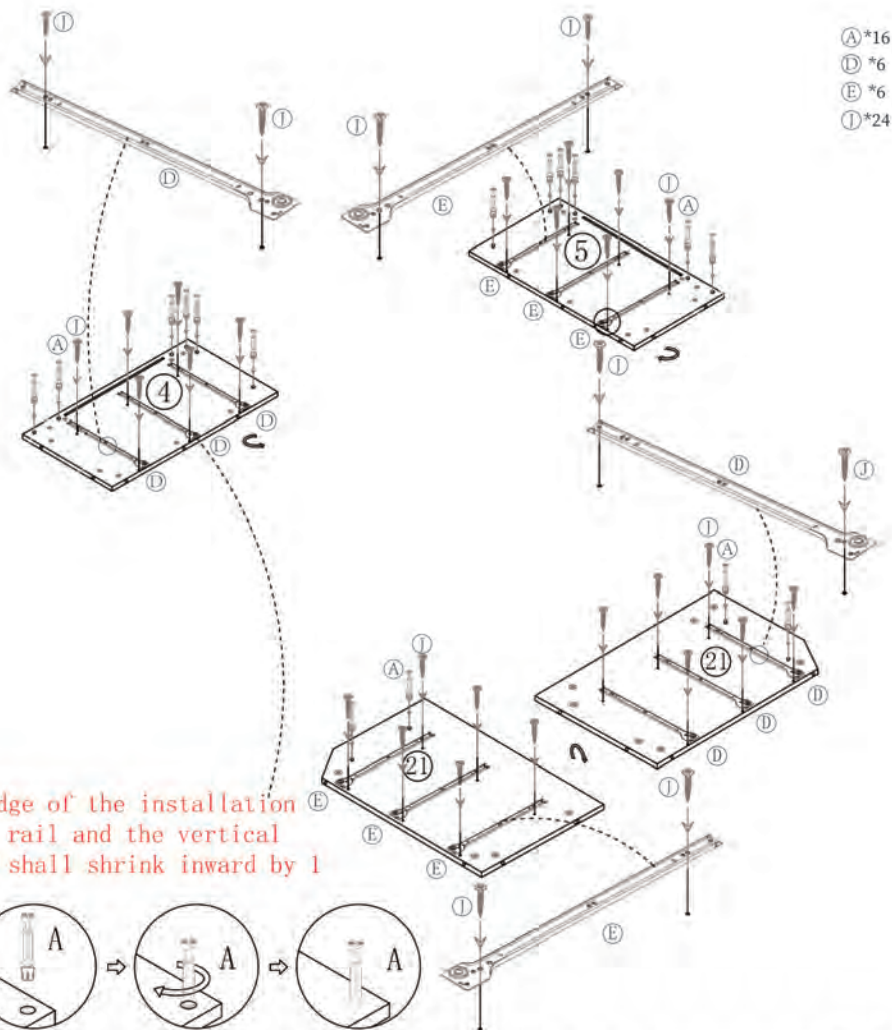
 Insert the cam bolt into the hole, then insert the cam lock and tighten.



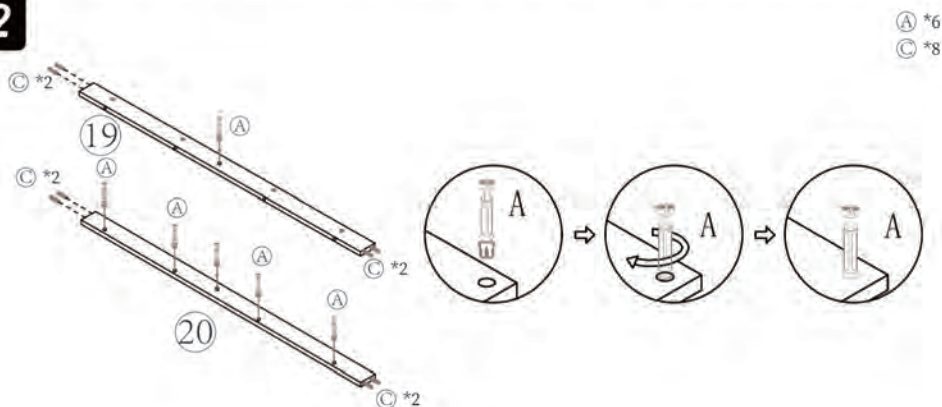
ASSEMBLY INSTRUCTIONS



1

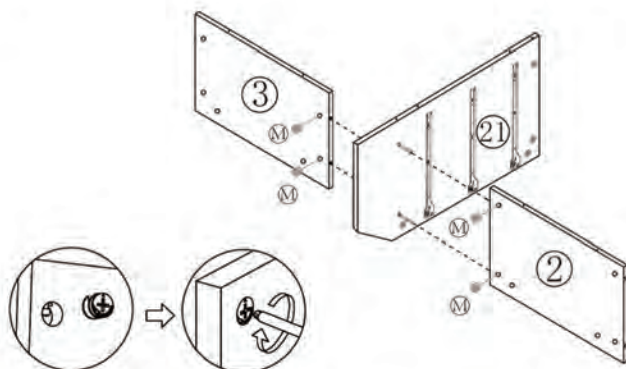


2



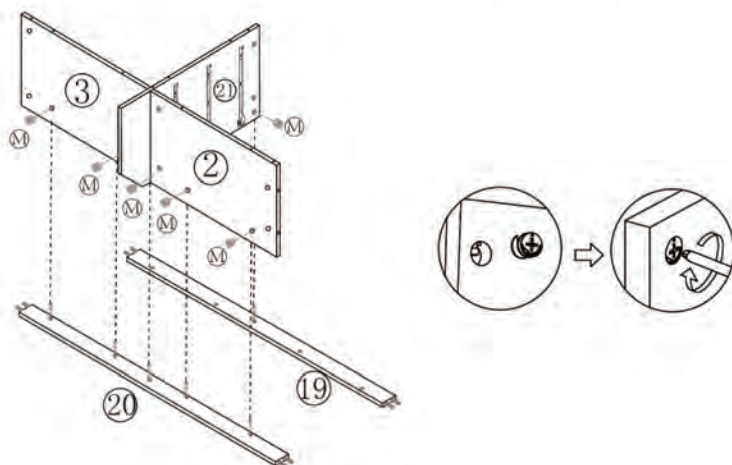
3

M *4



4

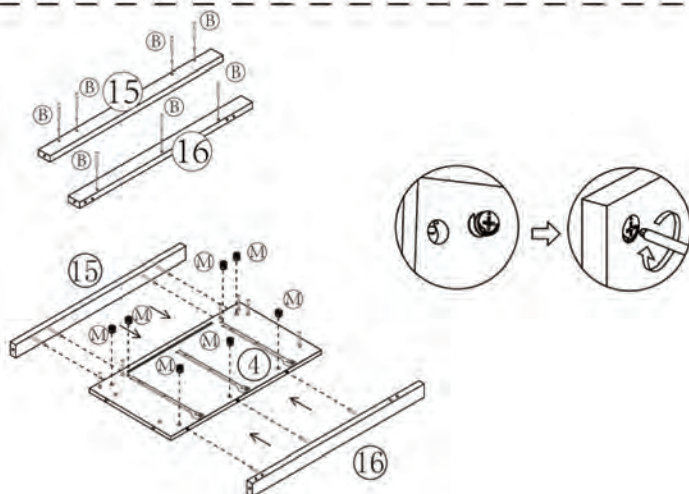
M *6



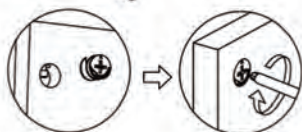
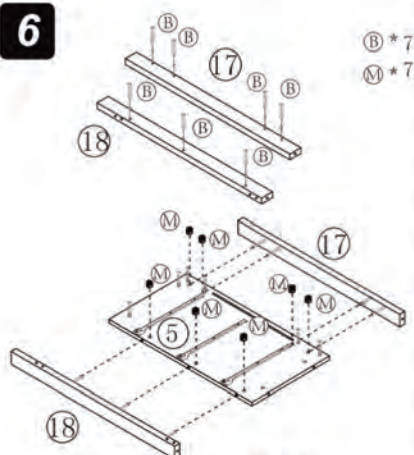
5

B *7

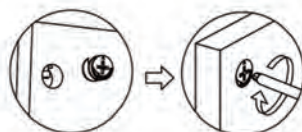
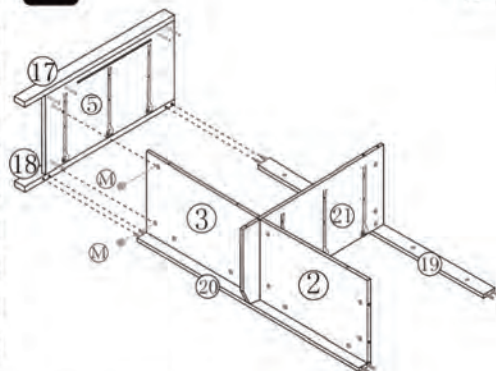
M *7



6

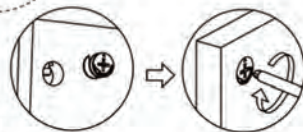
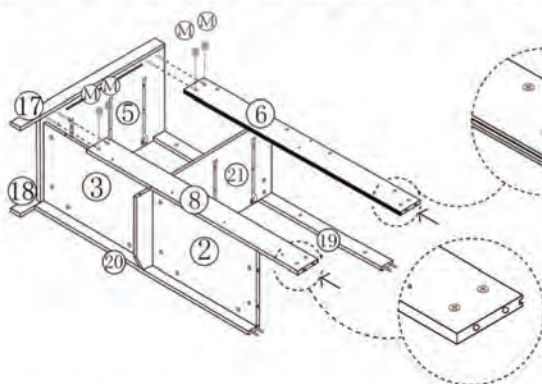


7



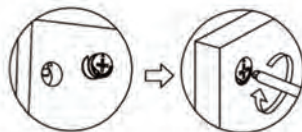
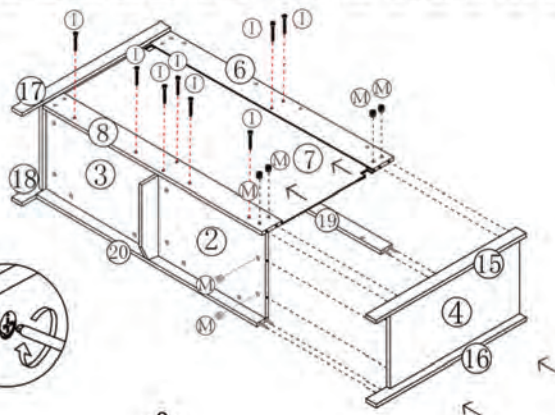
M *2

8



M *4

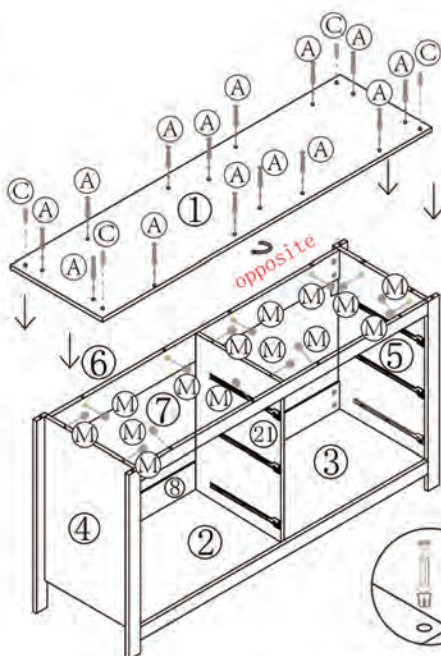
9



1 *8

M *6

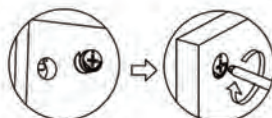
10



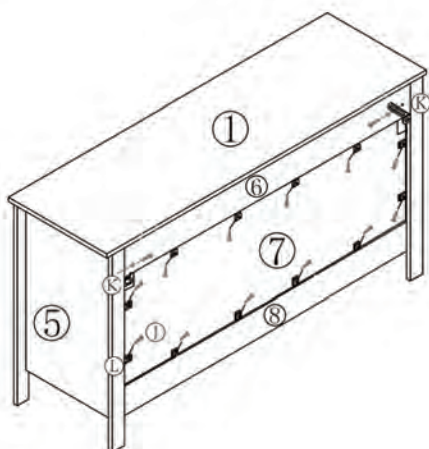
A*14

C*4

M*14



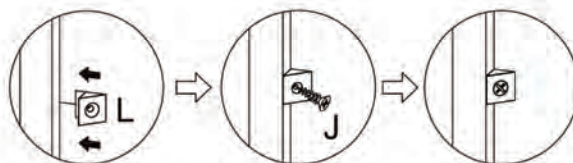
11



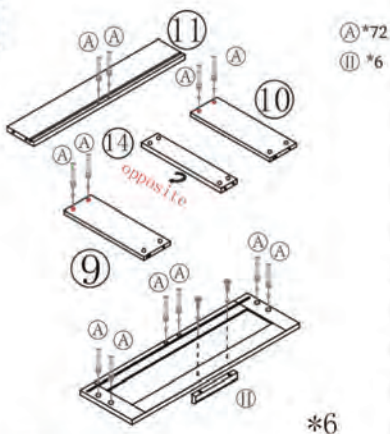
①*14

Ⓚ*2

Ⓛ*12



12

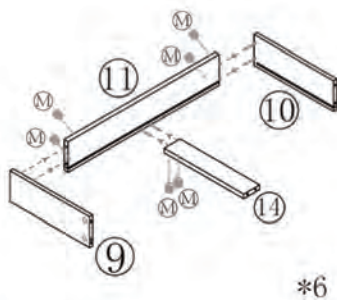


*Repeat this step 6 more times.



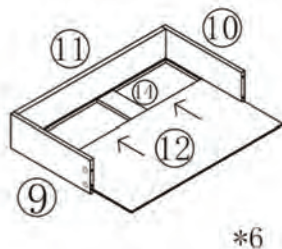
13

M *36



*Repeat this step 6 more times.

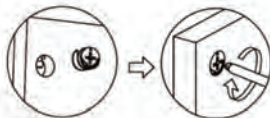
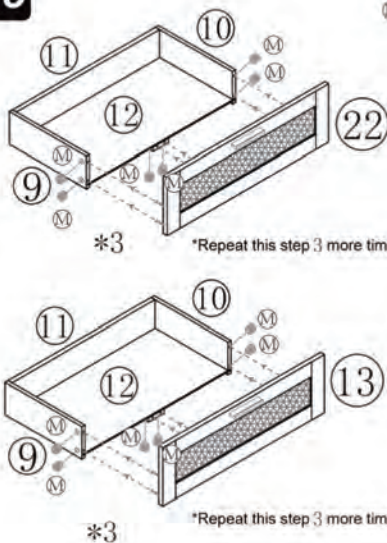
14



*Repeat this step 6 more times.

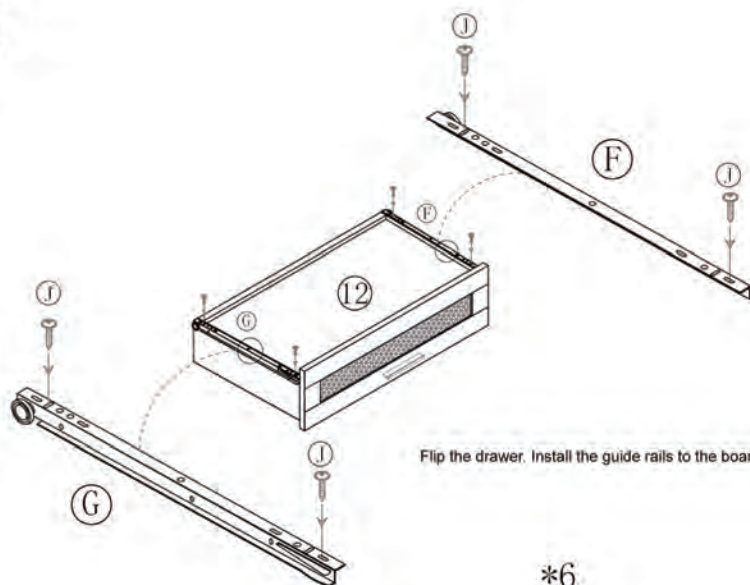
15

M *36

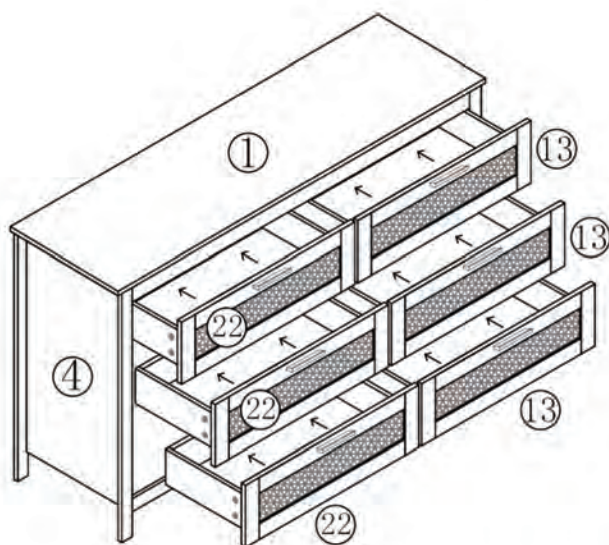


16

Ⓕ *6
Ⓖ *6
Ⓘ *24



17



Align the drawers parallel with the slide slots on both sides and slowly push them inward.

