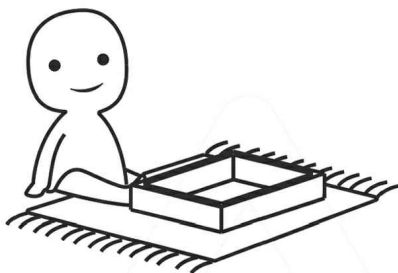


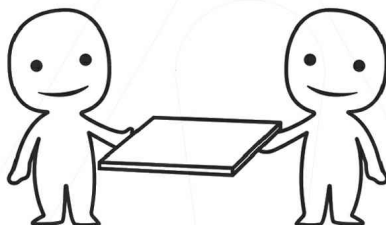
IMPORTANT INFORMATION!

please read the entire manual before starting to assemble and/or using this product. follow the manual thoroughly and keep it for further reference.



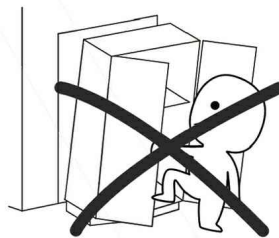
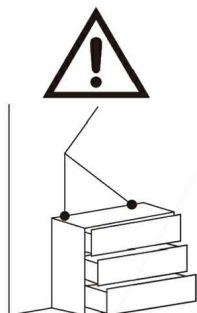
AVOID SCRATCHES!

In order to avoid scratching this furniture should be assembled on a soft layer—could be a rug.



IMPROVE EFFICIENCY !

Try to find a partner to install with you, which can speed up the installation efficiency and shorten the time.



ANTI-TOPPLE WARNING !

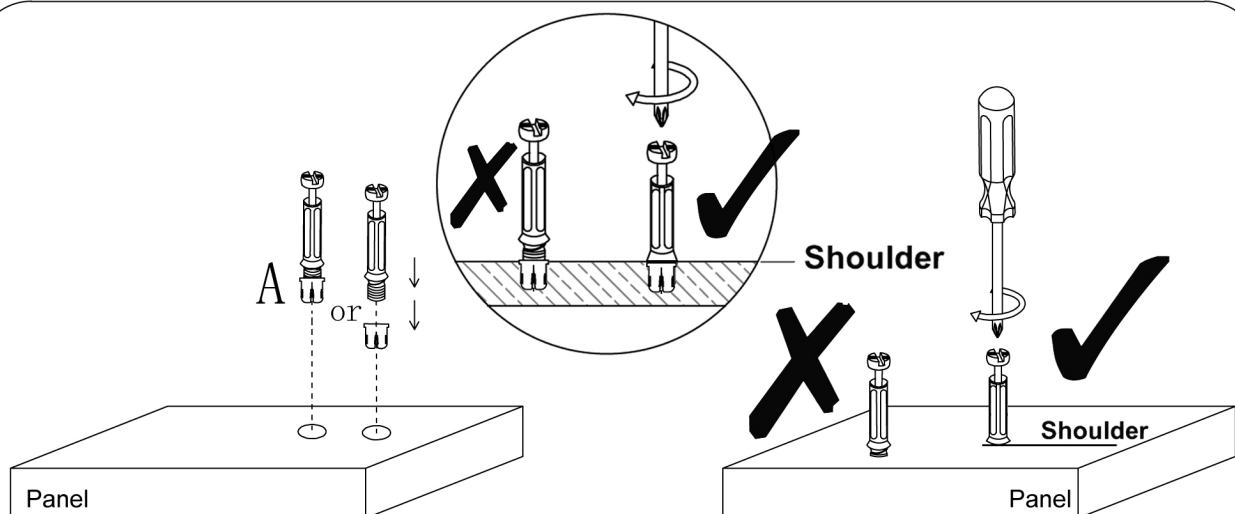
Overtipped furniture can cause serious or fatal crush injuries. To prevent tipping over, be sure to use the wall attachment, if not included with this product. Please purchase the wall attachment that fit your wall. If unsure, seek professional advice. Please read and follow each step of the instructions carefully.

IMPORTANT !

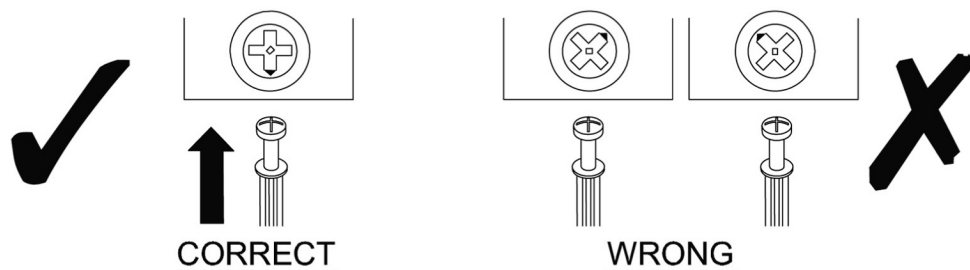
It is important that any product which is assembled using any kind of screw is re-tightened 2 weeks after assembly, and once every 3 months - in order to assure stability through-out the lifespan of the product.

For regular maintenance and cleaning of the product, for the frame, please use a rag dipped in neutral detergent to fully wipe it, and then dry it with a clean rag. For glass materials, wipe with a rag dampened with water glass cleaner, and then dry with a dry rag.

Do not use an electric screwdriver, and do not use too much force when installing, because the board is easy to break.

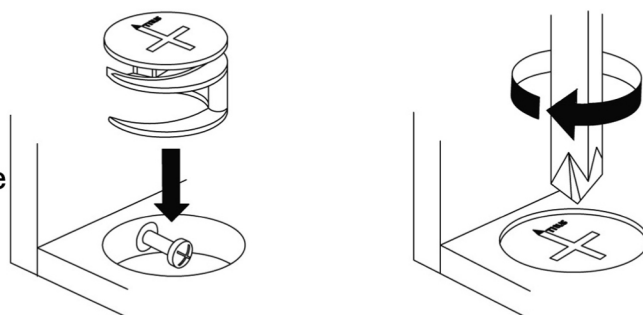


Tighten quickfit until shoulder is flush with the panel. Do not overtighten or undertighten.



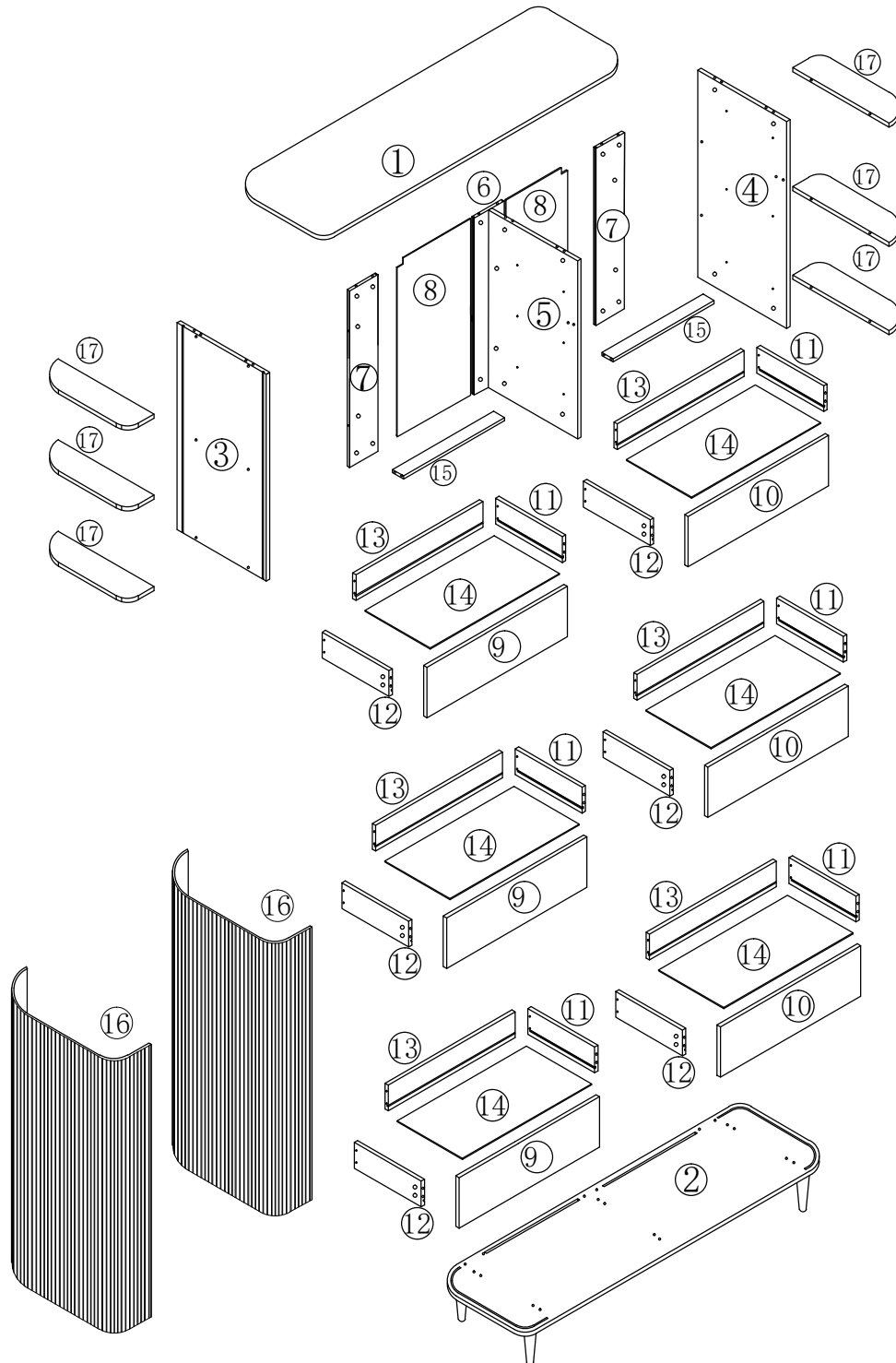
When fitting the cam lock, ensure the starting position is correct before you insert the connecting quickfit.

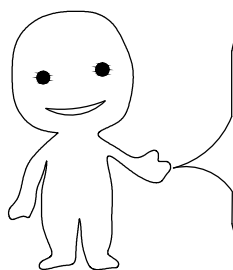
The quickfit head should be in the center of the cam lock when the two panels are joined. The cam lock should be inserted before the quickfit.



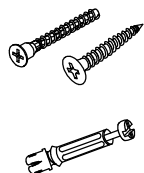
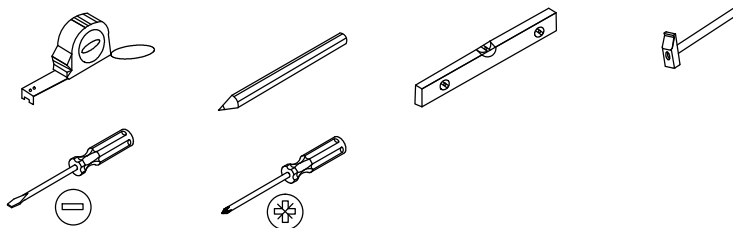
Turn the cam lock clockwise to tighten.

Parts List





Please prepare the following tools

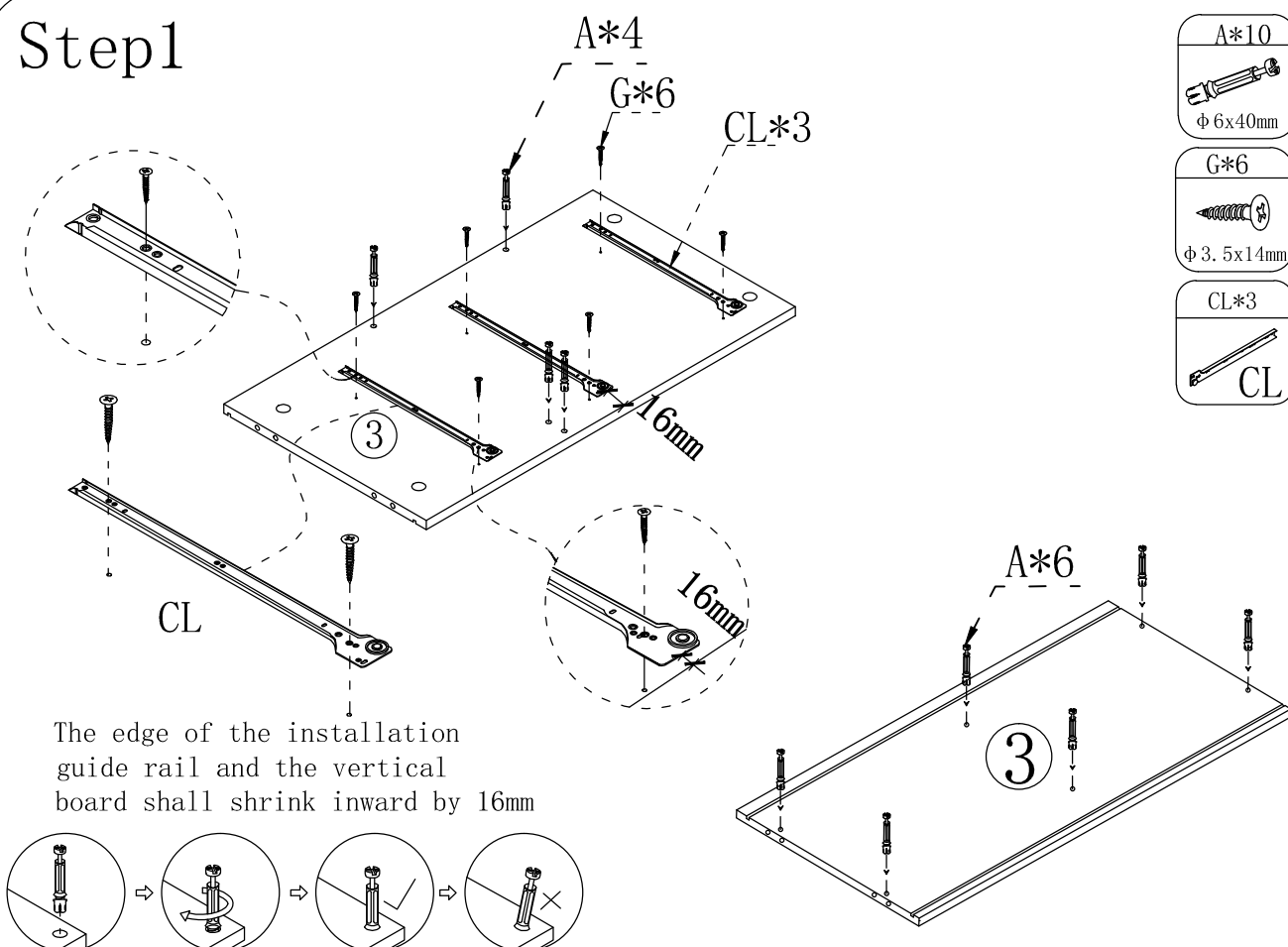


When installing, please carefully confirm whether each screw corresponds to the manual, accessories with similar shapes can be distinguished by size

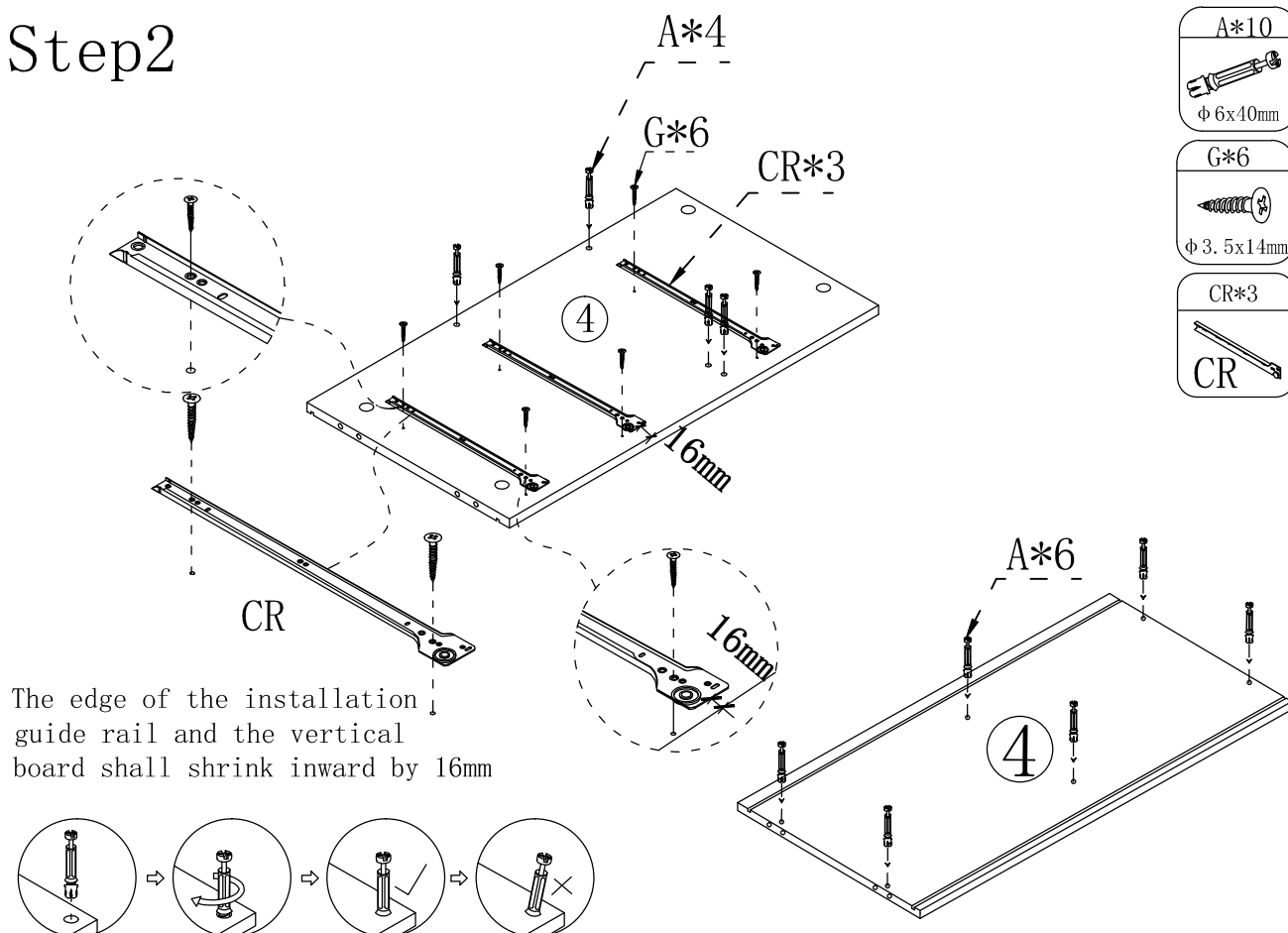
Tips: The number after "+" represents the spare hardware

 $\phi 6*40$		 $\phi 8*40mm$		 $\phi 128mm$		 L 300mm	
Ⓐ	74+1 pcs	Ⓑ	12+1 pcs	Ⓒ	6 pcs	Ⓓ	6 pcs
		 $\phi 3.5*35mm$		 $\phi 3.5*14mm$			
Ⓔ	2 pcs	Ⓕ	24+1 pcs	Ⓖ	100+6 pcs	Ⓗ	1 pcs
Ⓙ	4 pcs	Ⓚ	5 pcs	Ⓛ	16+1 pcs	○	
○		○		○		○	

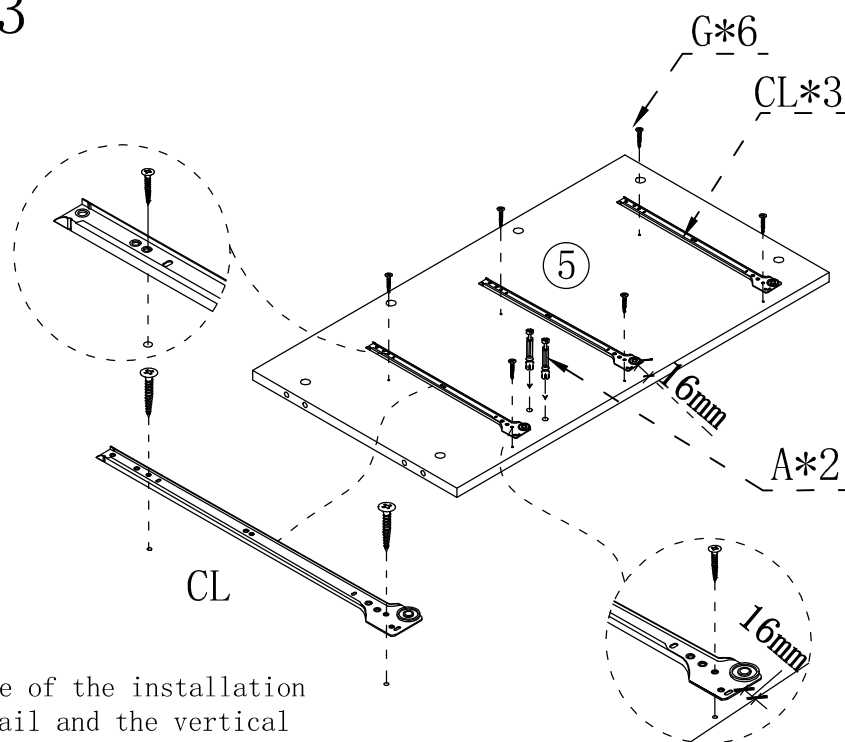
Step1



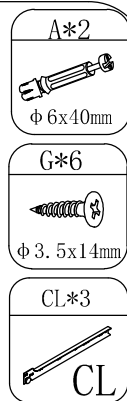
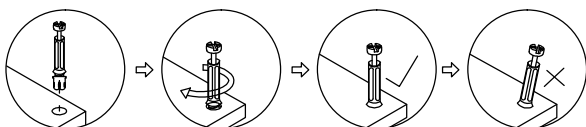
Step2



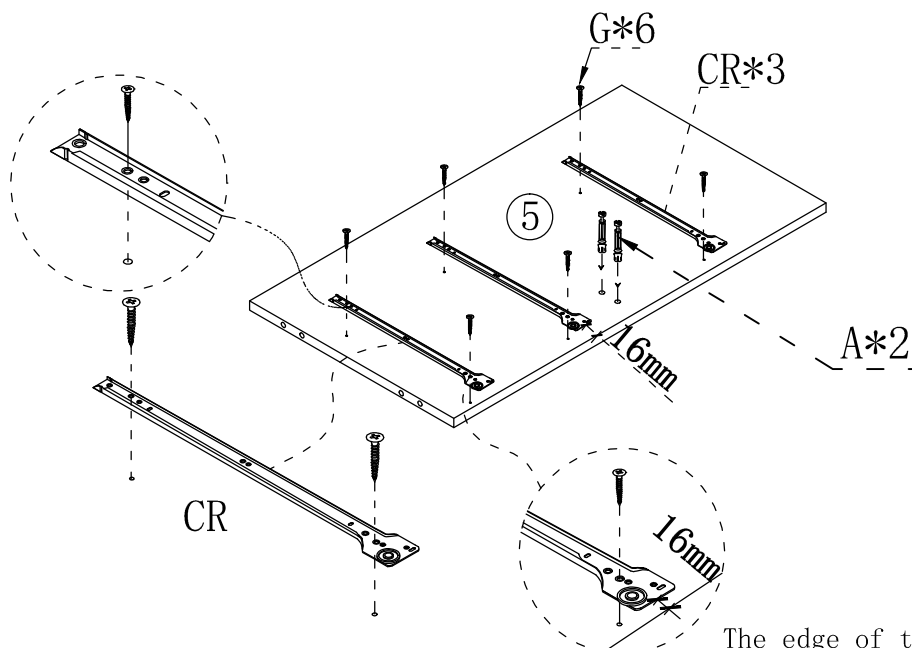
Step3



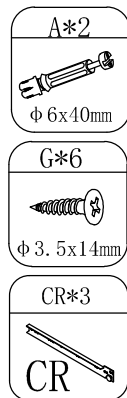
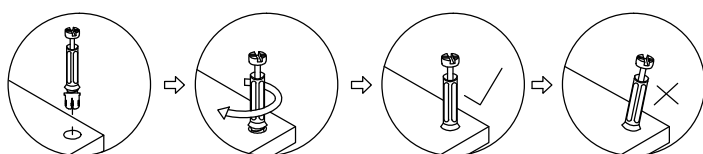
The edge of the installation guide rail and the vertical board shall shrink inward by 16mm



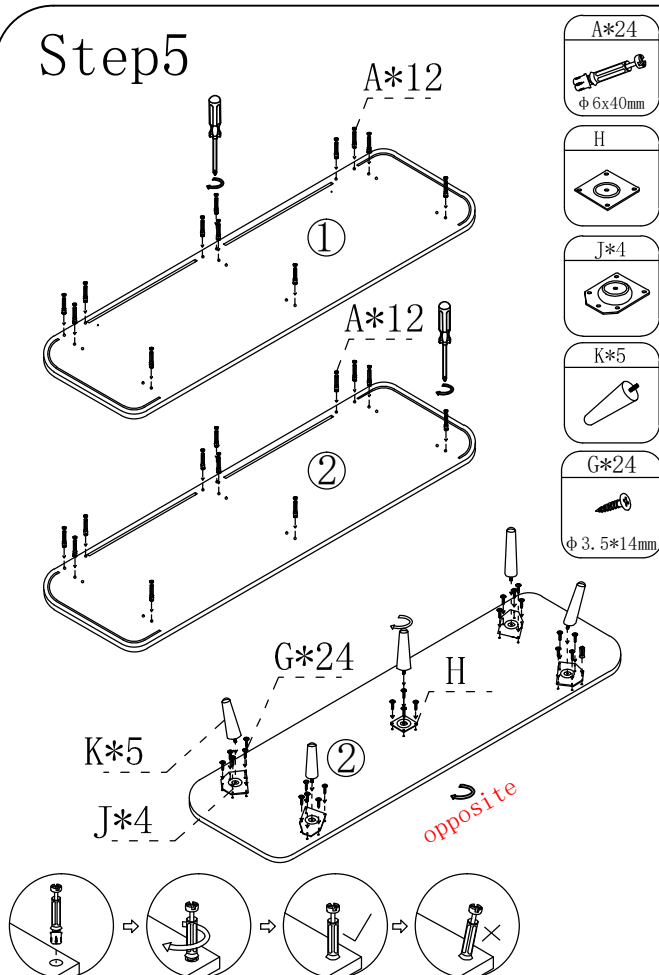
Step4



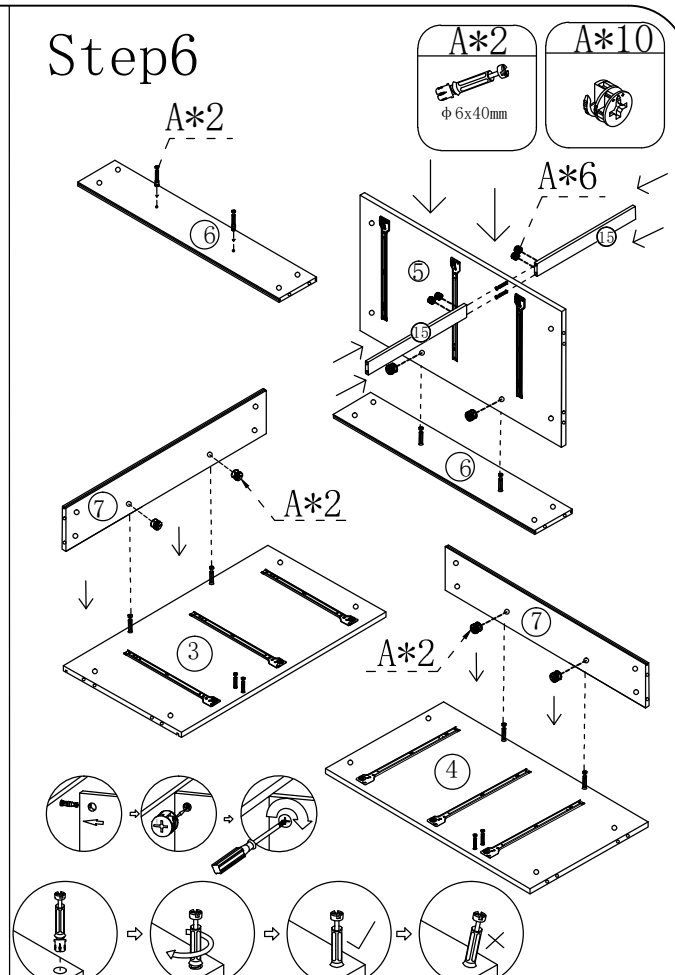
The edge of the installation guide rail and the vertical board shall shrink inward by 16mm



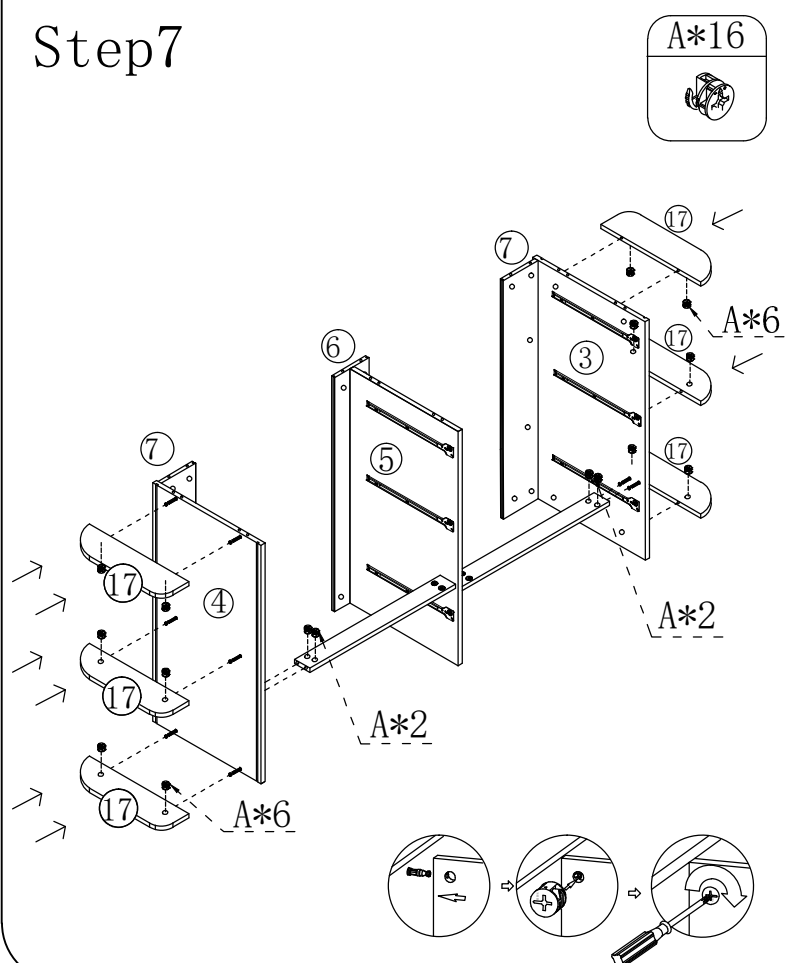
Step5



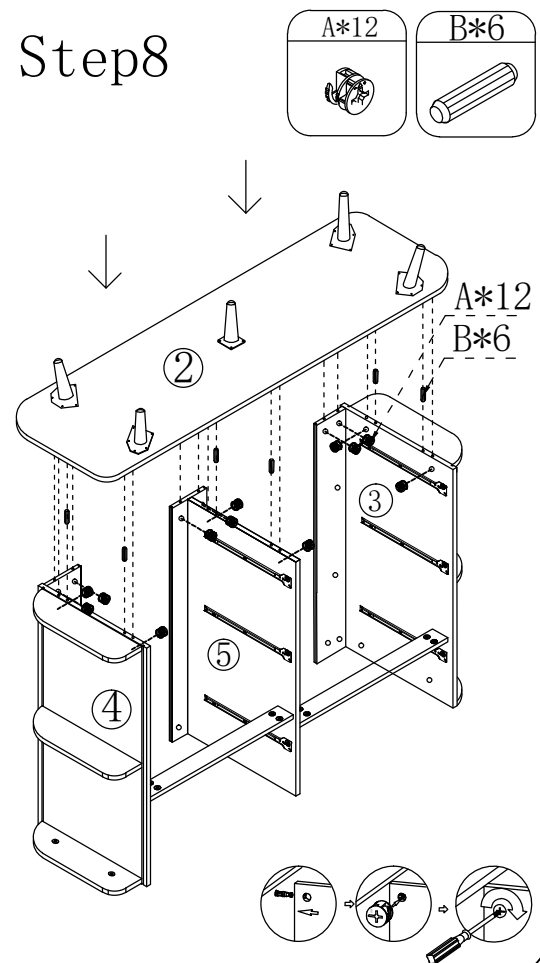
Step6



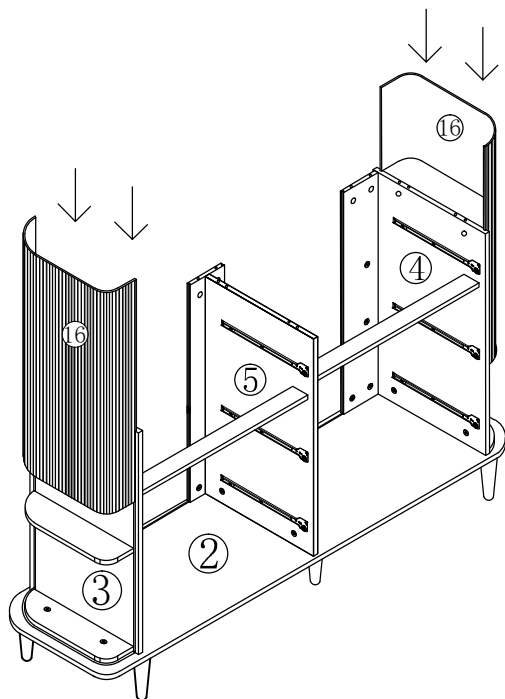
Step7



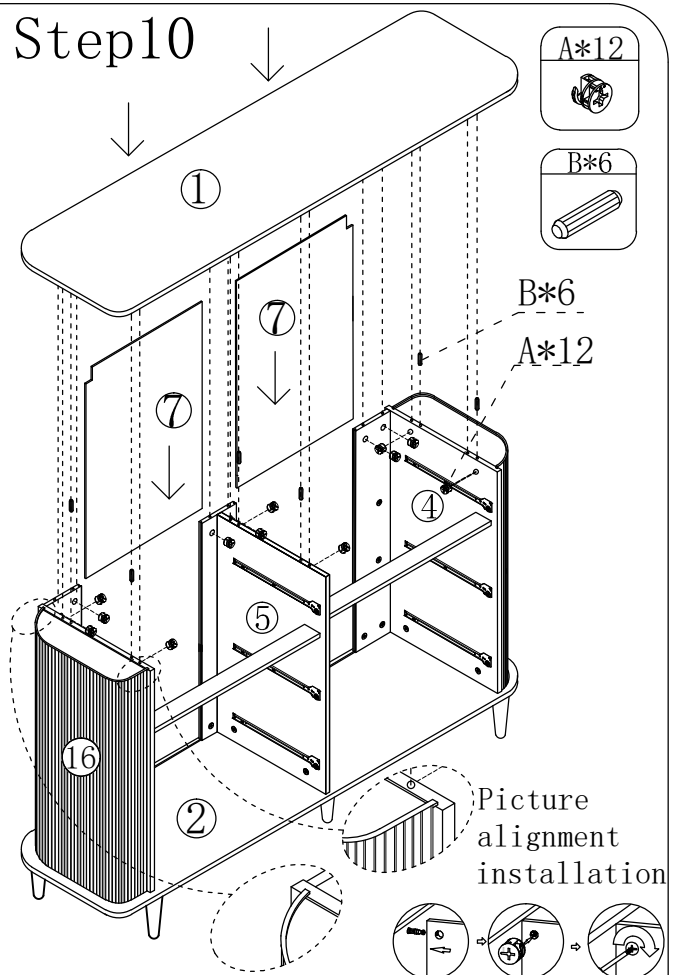
Step8



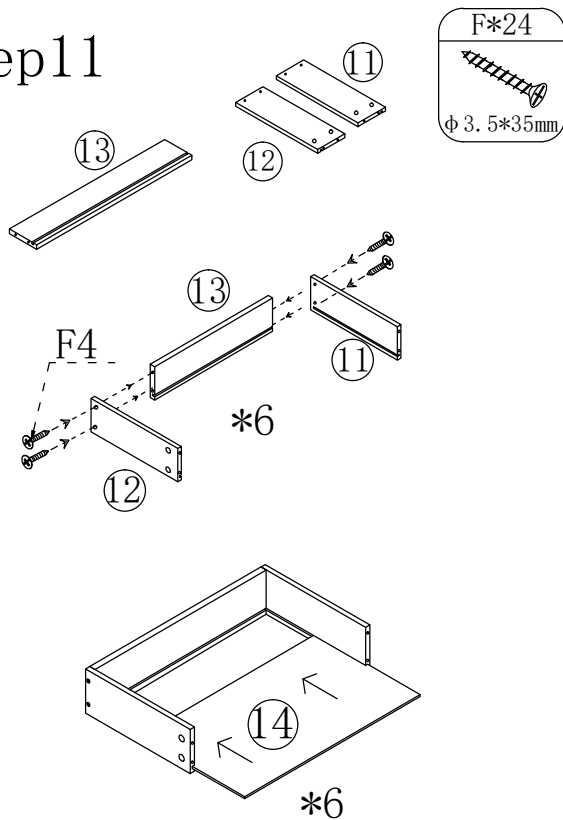
Step9



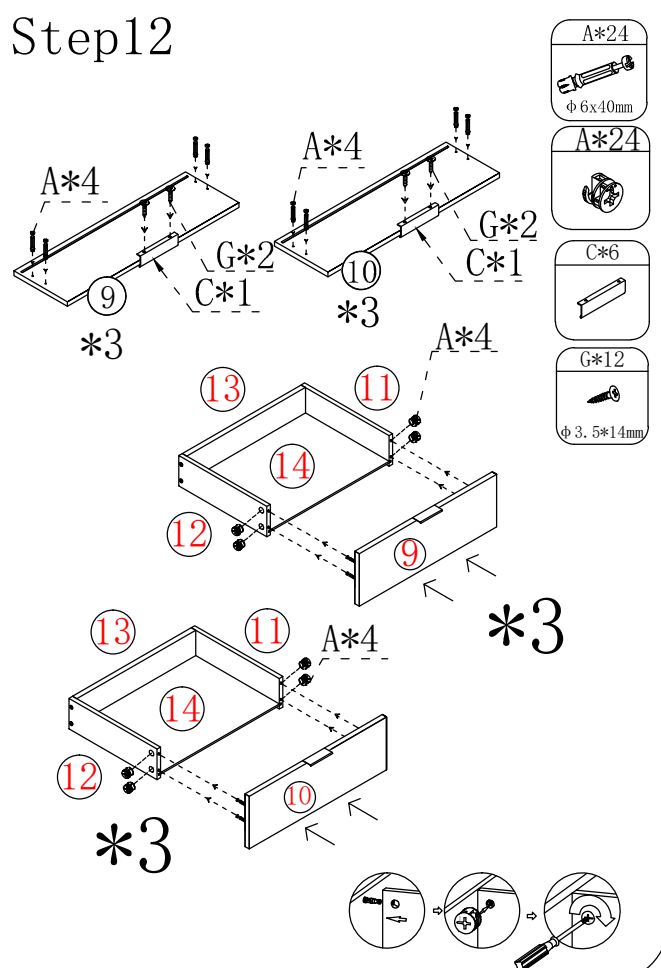
Step10



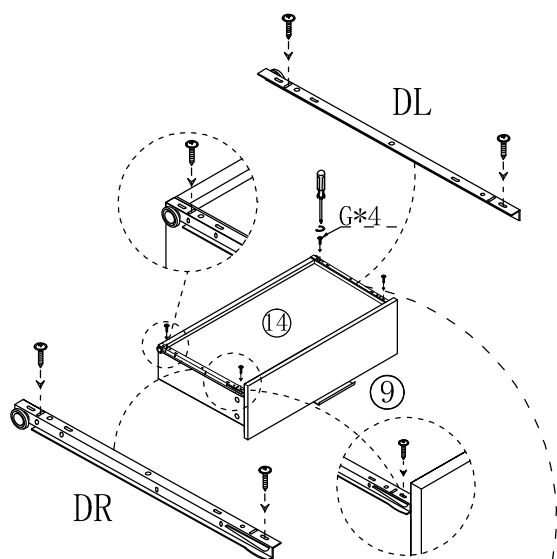
Step11



Step12



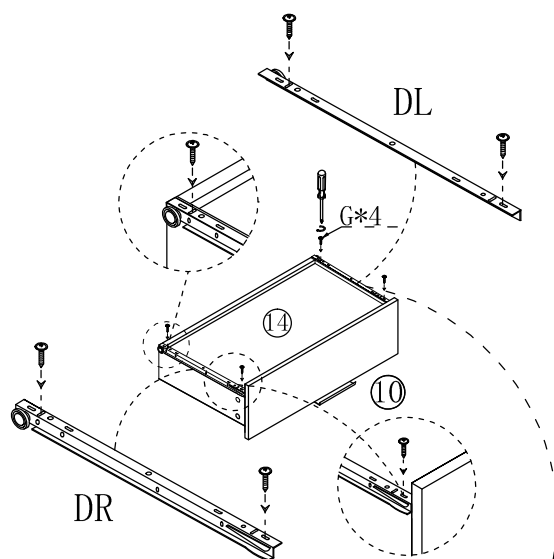
Step13



*3

Install the guide rail perpendicular to the board edge

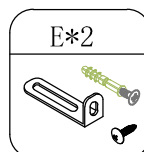
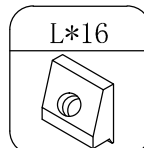
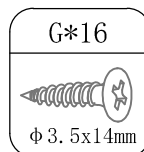
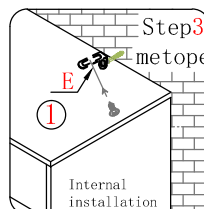
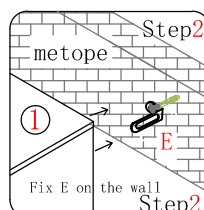
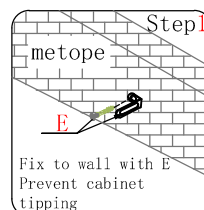
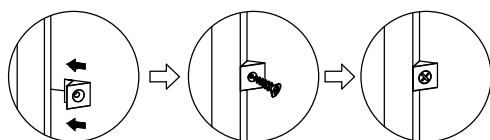
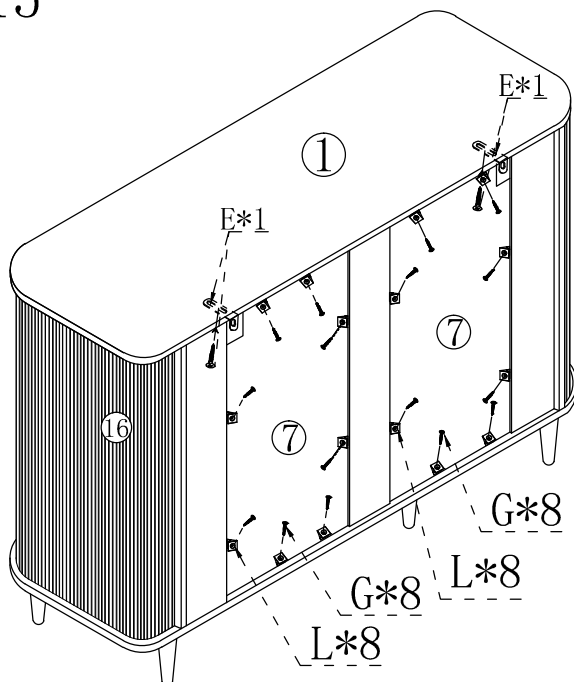
Step14



*3

Install the guide rail perpendicular to the board edge

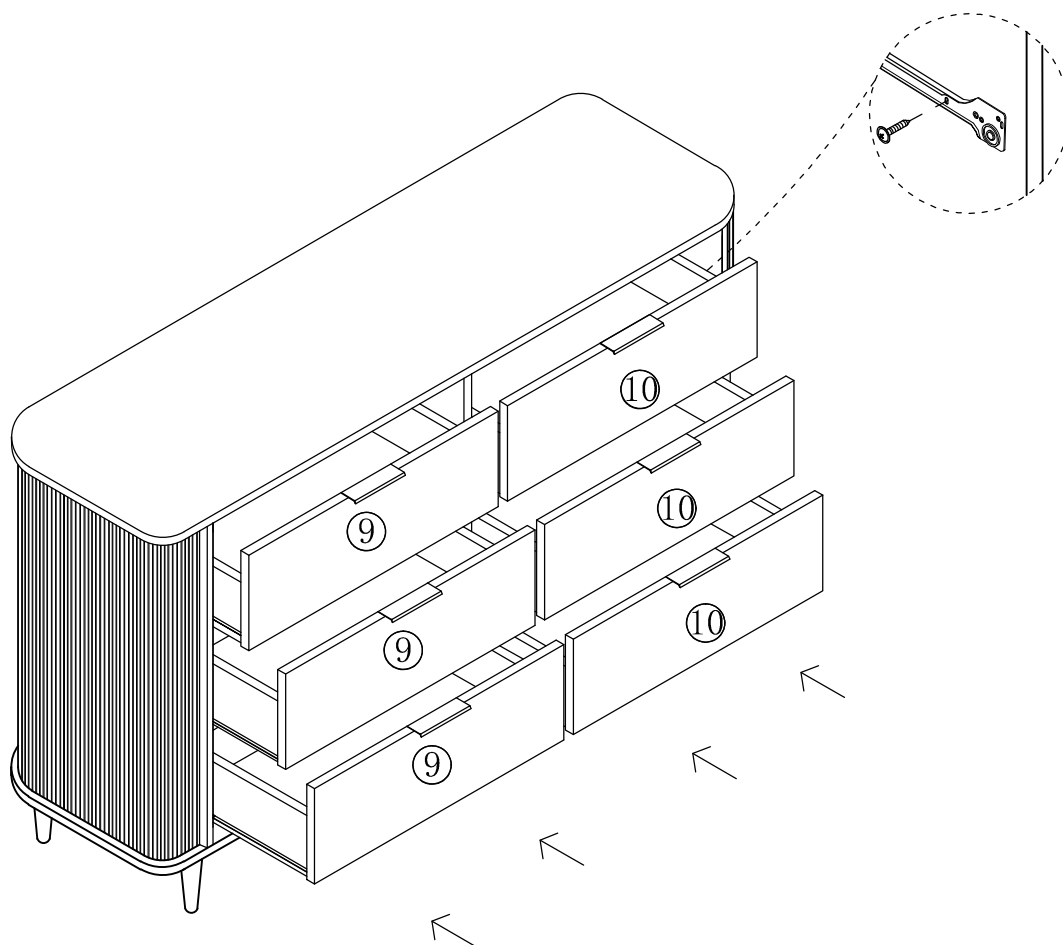
Step15



Fix E2 on the wall
Internal installation

Step16

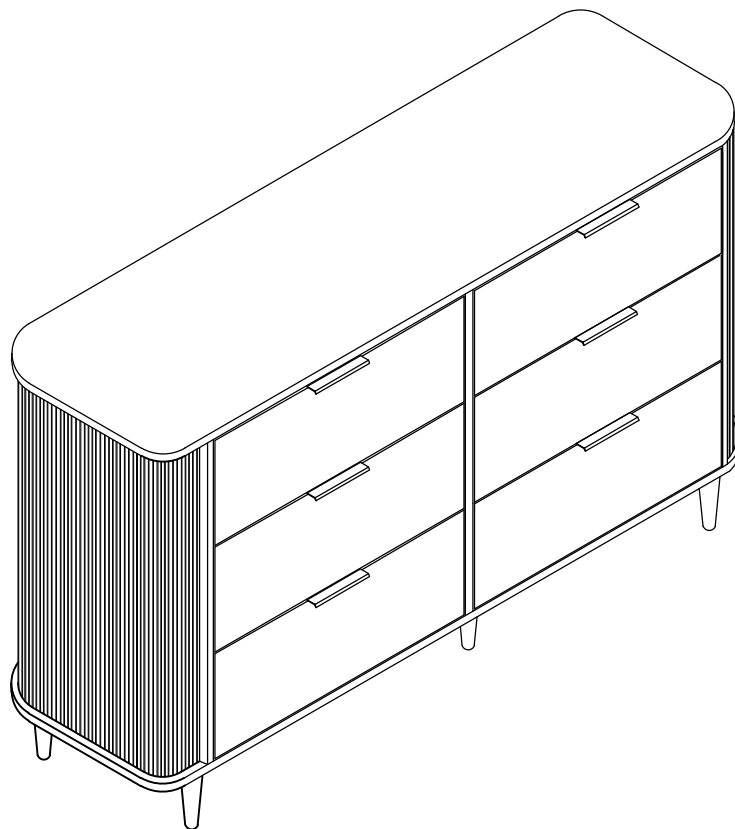
Fixed internal slide screw
adjustable gap height



Align the drawer parallel with the
slide slots on both sides and slowly
push it inward.

Step17

installation is complete



SAFETY TIPS:

Static charge may cause dust on foam- clean with a dry or damp cloth.

Small foam strands may be present-handle gently and dispose of properly.

Do not burn or incinerate. Check local recycling guidelines.